



2025

PARENT

HANDBOOK

WATERVALE PRIMARY SCHOOL



WATERVALE PRIMARY SCHOOL
CONTACT INFORMATION

PHONE: 8843 0186

MOBILE: 0484 910 612

ADDRESS: 27 MAIN NORTH ROAD, WATERVALE SA 5452

EMAIL: DL.0470.INFO@SCHOOLS.SA.EDU.AU

WEBSITE: WWW.WATERVALPS.SA.EDU.AU

PRINCIPAL WELCOME MESSAGE



Keliesha Bunfield
Principal

Welcome to Watervale!

We are thrilled to have you and your family join our vibrant school community. At Watervale, we believe in the power of education and the importance of fostering a strong sense of community among our learners, parents, and staff. Together, we can create an environment where every child can thrive and reach their full potential.

Our mission is to provide a comprehensive education that nurtures the holistic development of each student. We believe in fostering a love for learning by offering diverse opportunities that cater to their passions and interests. Whether it's through engaging classroom activities, extracurricular programs, or community initiatives, we are committed to supporting your child's academic, social, and emotional growth.

At Watervale, our values are the foundation of everything we do. Community, Happiness, Learning, and Respect guide our actions, interactions, and decision-making processes. We strive to create a safe and inclusive environment where every individual feels valued, respected, and heard. Using our values, we empower our students to become confident learners, effective communicators, and compassionate members of society.

We align our teaching and learning programs with the Australian Curriculum (ACARA) which ensures our educational practices are based on the latest research and best pedagogical approaches. Our dedicated team of educators is committed to providing high-quality instruction, individualised support, and a nurturing learning environment.

This handbook serves as a valuable resource to help you navigate the various procedures and policies of our school and the Department for Education. It will be regularly updated to reflect any changes or new developments. We encourage you to familiarize yourself with its contents and reach out to us if you have any questions or suggestions.

At Watervale, we believe in continuous improvement, and your input is invaluable to us. We greatly appreciate your thoughts, feedback, and ideas as we work together to enhance the educational experience for our students. We look forward to building a strong partnership with you and your family, and we are excited about the journey ahead.

Kind Regards,

Keliesha Bunfield
Principal of Watervale Primary School

We all hope you enjoy your time teaching at Watervale Primary School. Any questions please ask!

PURPOSE OF WATERVALE PRIMARY

In 2024, a collaborative Purpose Statement was built with our staff and families. This statement encompasses our beliefs around teaching, learning and being at Watervale Primary School.



PURPOSE

We foster an inclusive, respectful and community centred learning environment. We empower children to be curious, resilient and lifelong learners with the knowledge and mindset to thrive.

Watervale Primary School

WATERVALE VALUES



Community

We are a community. We value interactions with a range of people in a unified way. Through this, we achieve our common goals.

Learning

We are learners. We value adventure, curiosity, creativity, knowledge, optimism and success for each person. When we learn we use a growth mindset.

Respect

We are respectful. We value fairness, persistence, honesty, responsibility, organisation, friendship and kindness.

Happiness

We display happiness. We value humour, fun, optimism and joyfulness.

In 2025, we realigned how we celebrate our values with the learners in our school. See how they are celebrated below.

WAYS WE CELEBRATE OUR VALUES AT WATERVALE	
 <p>POSITIVE NARRATION Your Teacher and Peers might tell you when they see it! It will sound positive and uplifting.</p>	 <p>RECEIVE POM-POMS An Educator, or Peer, might pass on Pom Poms when they see the values in action. These can be stored in your personal/class jar and taken to the office at the end of the week.</p>
<p>NOMINATE OUR PEERS FOR AWARDS If we are seeing this behaviour often, we might nominate our peer for a value award in the jar in our classrooms.</p> 	<p>ASSEMBLY RECOGNITION At Assembly you might be awarded for showing the school values. You will have a special "Value Badge" to wear and get a "Power Up" Pom-Pom.</p>  
<p>LIGHTHOUSE AWARD At the end of the term, teachers and learners can nominate a learner for the Lighthouse Award. This award is given out at our final Assembly of the term. It is for someone who has shown all the values of Watervale Primary School throughout the term.</p> 	

THINGS TO KNOW

TEACHING STAFF

At Watervale Primary School, our staff is committed to learner success. We understand each child is unique and has their own set of strengths, challenges, and aspirations. With this in mind, our dedicated team of educators goes above and beyond to ensure each learner receives the support they need to thrive academically, socially, and emotionally. The staff for 2025 are:

Principal:

- Mrs Kel Bunfield

Teachers:

- Mrs Joanne Tilley (0.6)
- Mrs Loren Liebelt (0.6)
- Miss Alison Burford (0.2)
- Ms Ella McHenry (0.5)
- Mr Ben Johnson (0.4)

School Support Officers:

- Mrs Bec Bryksy
- Mrs Julie Kelly
- Mrs Liz Moreton
- Mrs Bec Reynolds
- Mrs Kristy Schutz
- Mrs Paulie Calaby

Pastoral Care Worker:

- Mrs Sharyn Williams

OSHC Director:

- Ms Samantha Muller

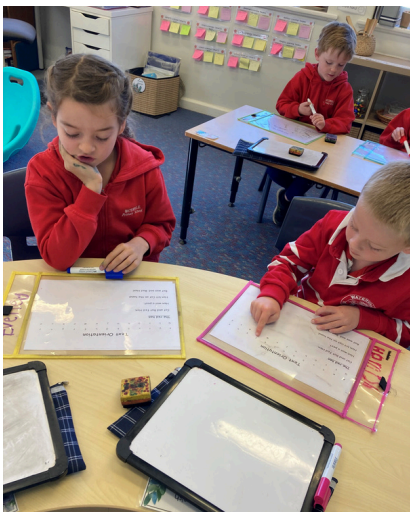
Grounds:

- Mr Dean Williams



THINGS TO KNOW

LEARNING AT WATERVALE



At Watervale Primary School, we value "lifelong learning." To do this, our teachers are committed to providing quality education through engagement with the Australian Curriculum, use of Explicit Direct Instruction and having quality instructional routines to build learners skills from Reception to Year 6.

LITERACY

Our literacy blocks happen in the morning from 8:55 - 10:35am. Children work through a structured, consistent routine which covers Phonological Awareness, Phonics, Reading Fluency and Writing instruction. We use well developed routines and an explicit approach to ensure children are able to engage regularly and have many opportunities to respond.

MATHS

During our Maths block, children work on the various strands of maths and have a daily focus on the building of Number skills through Recall of Facts, Base 10 and Calculating. Teachers engage children in practice of a range of skills through quality instruction and real-life problem solving.

SPECIALIST SUBJECTS

At Watervale, we teach Auslan, The Arts, Design and Technology, PE and Science as our Specialist topics. Children enjoy Sustainable Monday in which they engage in Woodwork, Cooking and Gardening with a strong literacy and numeracy foundation alongside real-world learning concepts.

THINGS TO KNOW

LEARNING AT WATERVALE



Here are some perspectives on learning from the children at Watervale.

Reception: *"I love learning how to write and read books"*

Year 1: *"My favourite part of writing is when we get to write a story"*



Year 2: *"Woodwork is my favourite part of Sustainability"*

Year 3: *"Learning new things in Maths and how it changes each day, but it still makes sense"*

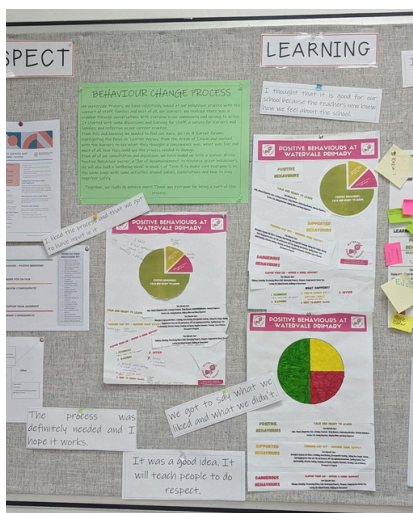
Year 4: *"I love the gardening program"*



Year 5: *"I like learning with Mr Johnson and doing fun Maths"*

Year 6: *"We are privileged here at WPS to use devices, and all the support we receive"*

WATERVALE POSITIVE BEHAVIOURS



In 2024, alongside our learners and families, we collectively restructured our Positive Behaviours at Watervale Primary.

Rationale:

Watervale Primary School believes that every learner, regardless of cultural or social background, be treated with respect at all times. Our site provides a social context in which learners are supported and taught how to accept responsibility for their own behaviour.

We Believe:

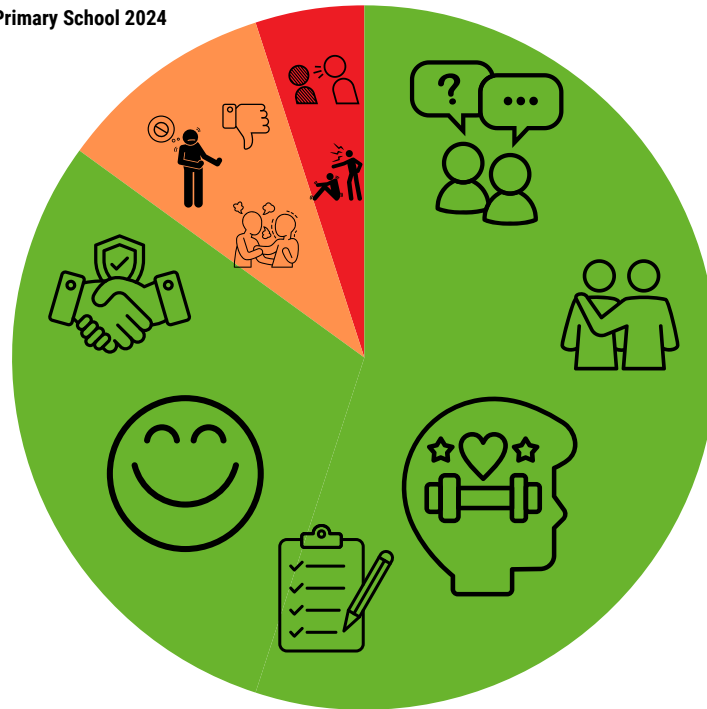
- All children's physical, social, emotional, cognitive and spiritual wellbeing is paramount to their successful development
- In providing learners with a broad range of experiences through inquiry play
- Everyone has a responsibility to demonstrate appropriate behaviour and attitudes
- Learners have a right to be provided with a safe and secure learning environment
- Children will behave responsibly and appropriately following the school values
- Parents and carers have a responsibility to behave appropriately within our site
- Parents have right to know and understand their child's education
- Educators are to be respected by both children and adults
- Educators are responsible for the operations and visitors on site and the wellbeing of children and one another
- Educators, parents and the community have a shared responsibility to create safe and secure environments for children and staff and model appropriate behaviours.



POSITIVE BEHAVIOURS AT WATERVALE PRIMARY



Written by the Learning Community of Watervale Primary School 2024

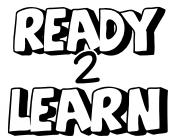


OUR PROCESS TO SUPPORT YOU TO GET BACK TO LEARNING



1. REMINDER

Tell us "what is the rule again?"



2. WARNING

Check your 'Ready To Learn' Plan - reset and try again



3. CLASS CONSEQUENCE

Adult support to get you back on track to learn



4. LEADERSHIP SUPPORT

Leadership support to get you back on track to learn



5. LEADERSHIP CONSEQUENCE

Leadership support to get you back on track to learn

POSITIVE BEHAVIOURS

READY TO LEARN



Your Educator Sees:

Display of the School Values, Calm, Honest, Respectful, Kind, Listening, Focussed, Using Manners, Celebrating Mistakes, Showing Happiness, Positive Talk, Asking Questions, Helping Others and Being Organised

THESE BEHAVIOURS ARE CELEBRATED BY YOUR EDUCATORS

SUPPORTED BEHAVIOURS

NEEDING SOME SUPPORT



Your Educator Sees:

Ignoring instructions, Off task, Disrespect of people, property or self, Arguing, Back Chatting, Avoidance, Ignoring Instructions, Poor Sportsmanship, Negative Comments

THESE BEHAVIOURS NEED SUPPORT FROM YOUR CLASSROOM TEACHER – REMINDERS/ CONSEQUENCE

UNSAFE BEHAVIOURS

LEADER SUPPORT



Your Educator Sees:

Violence, Swearing, Threatening Others/Self, Destroying Property, Weapons, Inappropriate Device Use, Leaving the School Grounds, Bullying or Harassment

THESE BEHAVIOURS REQUIRE THE LEADER – OFFICE, TAKE HOME, SUSPENSION

COMMUNITY

HAPPINESS

LEARNING

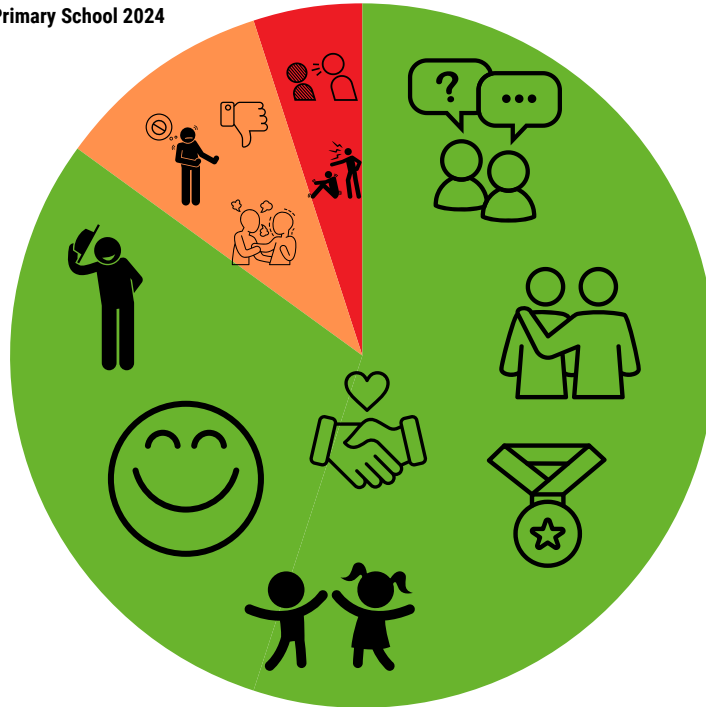
RESPECT



POSITIVE BEHAVIOURS IN THE YARD AT WATERVALE PRIMARY



Written by the Learning Community of Watervale Primary School 2024



OUR PROCESS TO SUPPORT YOU TO GET BACK TO PLAYING



1. REMINDER

Tell us "what is the rule again?"



2. WARNING

"Are you ready to play?"



3. WALK WITH THE TEACHER

Take a calming walk with the yard duty educator



4. SHELTER BREAK

Take a moment under the shelter with the timer to reset.



5. LEADERSHIP CONSEQUENCE

Leadership will talk with you in the office or phone home.

POSITIVE BEHAVIOURS

READY TO PLAY



Your Educator Sees:

Playing Well, Being Kind, Including Others, Friendly Interactions, Respecting Children and Equipment, Helping Others When Needed, Sportsmanship, Inclusion, Safe Play

THESE BEHAVIOURS ARE CELEBRATED BY YOUR EDUCATORS!

SUPPORTED BEHAVIOURS

NEEDING SOME SUPPORT



Your Educator Sees:

Frustration, Cheating, Being Mean, Physical Touch, Arguing, Unfair, Yelling, Rough Play, Going out of Bounds, Taking Others Play Equipment.

THESE BEHAVIOURS NEED SUPPORT FROM THE YARD DUTY EDUCATORS - REMINDERS/ CONSEQUENCE

UNSAFE BEHAVIOURS

LEADER SUPPORT



Your Educator Sees:

Leaving the School Grounds, Violence, Bullying, Swearing, Stealing Personal Property,

THESE BEHAVIOURS REQUIRE THE LEADER - OFFICE, TAKE HOME, SUSPENSION

COMMUNITY

HAPPINESS

LEARNING

RESPECT

WATERVALE NO BULLYING CODE



**SHOW
RESPECT**



OUR BELIEFS:

- Bullying is unacceptable
- Bullying is the repeated abuse of power
- Bullying occurs because of a persons inability to tolerate difference
- Bullying is a form of discrimination
- Bullying can have a serious long-term effect on the health and wellbeing of people .



At Watervale, we believe:

- Bullying is unacceptable
- Bullying is the repeated abuse of power
- Bullying occurs because of a persons inability to tolerate difference
- Bullying can have a serious long term effect on the health and wellbeing of people.

What is Bullying?

- When a person repeatedly does or say something for the purpose of hurting or threatening someone
- Persistent unwelcomed behaviour that makes you feel uncomfortable, hurt, scared, embarassed and isolated
- Bullying behaviour is deliberate

What do we do at school?

- Listen and talk to the person being bullied and the person who has bullied
- Help everyone involved to improve their relationships
- Negotiate an agreement of follow up actions
- Check that the agreement is complete
- Bullying may result in immediate progression to Suspension
- Notify parents of children involved

At Watervale, we ensure all children are safe, happy and have the opportunity to share their problems with a trusted adult.

WATERVALE

COMMUNICATION

In 2025, we continue to build positive communication with families and the wider community. Below is some information around how we will communicate with you.

EdSmart

EdSmart will send emails directly to your inbox with notes for upcoming excursions, events, it will also include permission slips and general notices. You are able to sign them from your device and get them back to school without handling of paper. It is an Australian tool trusted by hundreds of schools to improve communication in the school community and all data is held in a secure database only accessible to selected school staff.

SeeSaw

SeeSaw is for teachers and learners to communicate a range of things including:

- Work samples
- Achievements
- Learning Target/Goals will be found in learning spaces. These will demonstrate your child's current goals. These are learner directed based on current learning data. They will be sent home via SeeSaw
- Preliminary discussions around behaviour/learning

Facebook

Facebook will provide positive promotion of our site. This will all be done in line with the Department guidelines. The parent messenger group is used to put up last minute reminders and assist with your planning.

Newsletter & Assembly

The Newsletter will come home every three weeks on Thursday's via an email link. It will also be found on our website. In the newsletter, teachers include information that demonstrates connection with our SIP goals.

Assemblies are run in weeks 2,5,8 and 10.

Term Overviews

These will be sent home at the beginning of each term from each of the class and specialist teachers. This will give you a description of the learning taking place in the classrooms.

WATERVALE COMMUNICATION

Displays in the office and under the shelter:

We will have a photo collection of our children's and staff achievements displayed and rotated regularly. Outside we will display upcoming events, PAWS news, a space for Mrs William's information and Sustainability under the shelter.

Learning Achievement Folders:

Learning Achievement Folders will be sent home each term and will include children's

- Goals
- Work samples (Brightpath reports, Running Records, Maths updates)

Learning Target/Goals will be found in learning spaces. These will demonstrate your child's current goals. These are learner directed based on current learning data. They will be sent home via SeeSaw

Interviews:

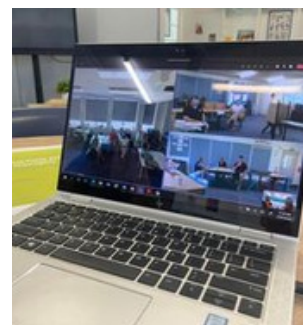
Interviews will be held in Term 1 and Term 3 to share and discuss children's learning. There will be 5 minutes with children, parents and teacher and 10 minutes with parents and teacher. Teachers will use of the format "stars and wishes" to share the conversation.

Emails:

We will use emails to share OSHC information; G.C. information; parent information; or follow up from principal in regard to parent meetings.

If you have any further questions or queries in regards to your children's learning, we ask you first talk to your child's teacher.

Please understand that teachers are preparing for learning between 8:30 – 8:50am but you can make appointments after school if necessary.



THINGS TO KNOW

LIBRARY & LUNCH ORDERS



Library:

We invite students to visit once a week, where they can borrow up to 2 books per visit. It's important to return the borrowed books by the following week to ensure everyone has access to our collection.

Library lessons are held on Tuesday's. If your child requires extra borrowing, please let us know.

Premiers Reading Challenge:

The Premier's Reading Challenge is a literacy engagement program that was introduced by the Premier in 2004 to:

- Encourage students to read more books and enjoy reading
- Improve literacy levels.

The Challenge requires students to read 12 books between the beginning of the school year and early September.

Book Club:

Scholastic Book Club is a convenient 'mail order' service for students. Browse the provided pamphlets and place orders of your choice. Orders can be made at the Front Office or online.

Lunch Orders:

Children can have their lunch supplied at school from the Watervale General Store, on a Thursday. Price lists are available from the Front Office and price updates are included with the newsletter.

WATERVALE

GRIEVANCE PROCEDURE

AT OUR SITE:

At Watervale Primary School, we believe good relationships and sound communication within the school community give all children a greater chance of success. In the event of a grievance, the following guidelines should be used.

PRINCIPLES OF OUR PROCEDURE

- Everyone is to be treated with respect
- All communication is respectful and individuals are not to be spoken about unkindly or unjustly through rumour or innuendo (this includes in the use of social media)
- Meetings to discuss grievances will be suspended if any person(s) behaves in an insulting, threatening or offensive manner

STUDENTS WITH A GRIEVANCE SHOULD:

1. If you feel okay to do so talk to the person about the problem, or ask a friend to help
2. Talk to the teacher or SSO about the problem at an appropriate time
3. If you feel uncomfortable, speak to someone, "with whom you feel comfortable with"
4. If issue is unresolved, speak to your parent(s)/caregivers

PARENTS WITH A GRIEVANCE TOWARDS A WATERVALE PRIMARY STAFF MEMBER

CAN:

- Arrange a meeting time with the staff member to discuss your concern. The meeting must be arranged and agreed to by both parties.
- An email will be sent after the meeting to outline the points of concern and steps to proceed
- Allow reasonable time frame for the issue to be addressed
- If the issue has not been resolved after the meeting, arrange a time to discuss with the Principal

Parent Complaint Hotline is: 1800 677 435

It is important that these concerns are dealt with in a confidential manner. The meeting will be discussed in a private space with the teacher (s), principal (when necessary) and family. When the matter is discussed in the student's hearing, it is important the student understands you have confidence the issue will be resolved at the school level.

The school can only deal with the issues that are raised in the ways outlined above. If we do not receive information then we assume all is well.



THINGS TO KNOW

OSHC



Watervale Primary offers OSHC services from Monday to Friday.

Children begin their afternoon with reading and spelling homework or a quiet activity; enjoy a healthy afternoon tea and then are engaged in a range of fun opportunities.

At OSHC we offer a range of before, after school and Vacation Care.

BOOKINGS ARE ESSENTIAL FOR ALL SERVICES.

PHILOSOPHY:

The Watervale and Auburn OSHC is a child focused service where children and families are welcomed into a safe and secured environment. We support children to be involved in the decision making process within the program, planning and making decisions around the expectations of their own behaviours.

COSTINGS:

- Before School Care - \$28 per session
- After School Care - \$35 per session per child.
- Vacation Care is \$80 per child.
- Vacation Care - Excursion Day - \$95
- Student Free Days - \$80

CCS payments can be accessed.

Please see the OSHC brochure or contact our OSHC Director, for further information.

THINGS TO KNOW

PLAYGROUP



Welcome to our inclusive Playgroup!

Join Kristy every Monday during term time for a supportive community where parents, grandparents, and children come together. From newborns to preschool-age, everyone is welcome. Enjoy creative play, social interaction, and build connections with other families.

COST: Gold coin donation

TIME: 9:00 - 11:00am

WHERE: Resource Centre

Watervale Playgroup
Everybody is welcome

- Story Time
- Play Experiences
- Music
- Craft Activities

Meet Your Community

Mondays - 9:00 to 11:00
School Weeks Only

What to Bring -
\$2, Hat, Water Bottle and fruit.

Location - Watervale Library

Contact - 8843 0186

THINGS TO KNOW

PARENT PARTICIPATION



At Watervale Primary School, parents are welcome and encouraged to be involved! Teachers look for support in the classrooms to promote student learning.

Parents can contribute greatly and be actively involved in decision making through service on a range of committees. These include:

Governing Council

The council works with the Principal to develop policies, account for finances and represents the parent view on school management and educational matters. Members are nominated and voted onto this committee at the Annual General Meeting. This occurs in Week 4 of Term 1.

Grounds Committee

This committee has been established to develop our school grounds and provides an opportunity for parents to be involved in future plans for our grounds. Parents are invited to express interest in their involvement.

OSHC Committee

This committee is established to provide a parent voice to assist in the running of our OSHC. Parents are invited to express interest in their involvement.

THINGS TO KNOW

PARENT PARTICIPATION



PAWS—Parents at Watervale School

PAWS fundraises for the provision of resources and supports activities that strengthen our school community. All parents are welcome to attend the meetings in weeks 2 and 7. If you cannot attend meetings, please ensure you join the Facebook Group and support our school as you can.

Feedback:

In addition, all parents are asked at various times to respond to surveys from the school. In order to make decisions regarding future directions, we need to have everybody's response. These are usually attached to newsletters or emailed to families.

If you would like further information about parent participation, please do not hesitate to contact the Principal or staff for assistance.

THINGS TO KNOW

SCHOOL FEES



School fees or Material and Services Charges, are set following the Annual General Meeting of the school each year as part of the budget process. These fees are crucial in supporting the continuing high standards of the school's curriculum. Fees also include the stationery needed by each student.

School fees are to be paid at the beginning of the year and a notice appears in the newsletter. *The prescribed amount is the amount set out in Regulation 81 of the Education and Children's Services Regulations that schools can charge as a compulsory component of their materials and services charge without the requirement to poll the school community. The prescribed amount for 2025 is \$300 for a student enrolled in primary education.*

GOVERNMENT ASSISTANCE

Government assistance for school fees is available, subject to means testing. This scheme may be better known to parents as the School Card Scheme. If you have any questions, please do not hesitate to contact the school or Centrelink.

SCHOOL ACCOUNT DETAILS

Payments to the school can be made via EFT to:

- BSB: 105-030
- ACC: 14023 1640

Please email remittance to:

DL.0470.accounts@school.sa.edu.au

THINGS TO KNOW

SPECIAL EVENTS



ASSEMBLIES

The assemblies are run entirely by the students and are a celebration of students' learning and achievements. They are held in Week 2, 5 and 8 on Monday (T1 & 4) Wednesday (T2) Thursday (T3) afternoons from 2:50 pm. All parents and friends are welcome to attend and a TEAMS online link is available. A special assembly is also held at 1:45pm on the last day of each term, before a 2:10pm dismissal.

BOOK WEEK

Join us for Book Week in Week 5 of Term 3! Dress up as your favorite characters on Wednesday and enjoy a special Parent Morning.

CAMPS

Camps run each year. Biannually (odd years) a whole school camp will run and annually the children in Years 3-6 attend a camp. Parents are notified early to assist planning and to encourage participation. Arrangements for payments over time is also available.

EXCURSIONS

Excursions are arranged by teachers to support and extend the learning program for students. A specific note home will inform you of these.

SCHOOL CONCERT

Students celebrate their year by performing for parents and the community in a school concert. The concert is held at 'The Vale' and is followed by a shared supper.

THINGS TO KNOW

SPECIAL EVENTS



SPORTS DAY

Our Combined Sports Day is held in Term 3 with the following schools: Watervale, Auburn, Blyth, Manoora and Saddleworth. All students are expected to participate and parents are strongly encouraged to attend. Parents are responsible for transporting their child to and from the oval. The location will vary depending on the host school.



SWIMMING & SWIMMING CARNIVAL

Learners enjoy five swimming lessons in the first term, culminating in an exciting Swimming Carnival. Transportation is provided to the Clare pool.

The Swimming Carnival is held at 'The Valley's' after the swimming lessons. We combine with Auburn and Manoora Primary Schools. This is a fun afternoon of swimming races and team events. We encourage parent participation too!



WALKS AND TALKS

Join us for our quarterly Walks and Talks event. In Week 8 Friday in Term 1, 2 and 3, we invite the community to take part in a pleasant walk along the Riesling Trail, followed by a delightful morning tea at the school. Engage in conversations, enjoy nature, and embrace the community connection.

WATERVALE

SUN SMART GUIDELINES

RATIONALE

Too much exposure to ultraviolet (UV) radiation from the sun causes sunburn, skin damage and increases the risk of skin cancer. Sun exposure in the first 15 years of life contributes significantly to the lifetime risk of skin cancer. Australia has one the highest rate of skin cancer in the world.

This policy applies to all service activities and events, on and off site.

The goals of the Sun Smart Policy are to:

- Increase student and community awareness about skin cancer and sun protection
- Work towards a safe school environment that provides shade for students, staff and the school community
- Assist students to be responsible for their own sun protection

Our sun protection strategies

- This policy is for implementation for Terms 1, 3 & 4 and whenever the UV Index is 3 and above at other times.
- Daily UV levels and sun protection times, as reported by the SunSmart app, www.myuv.com.au or www.bom.gov.au, will be displayed by the school entry doors and will be updated every morning by a staff member.

Ensure all children and staff use a combination of sun protection measures **whenever the UV Index reaches 3**. Care is taken during the peak UV radiation times and outdoor activities are scheduled outside of these times, where possible (or alternatively in the shade).

- A combination of sun protection measures are considered when planning outdoor activities such as excursions and water based activities.
- Ensure that families and new staff are informed of the school's Sun Smart policy.
- The sun protection policy is in place during the following implementation times

Before school care: sun protection is not required, as the UV Index is rarely 3 and above at this time. During Terms 1 and 4 it is recommended to apply sunscreen to assist with sun protection for the remainder of the day. Sun protection is required for all outdoor activities from 1 August to 30 April and whenever the UV is 3 and above at other times. No hat = No play when UV levels are 3 and above.

After school care: sun protection is required during Terms 1 and 4, and whenever the UV is 3 and above at other times. Staff are encouraged to access the daily local sun protection times to determine if sun protection measures are required during Terms 2 and 3 Vacation care. Sun protection is required for all outdoor activities from 1 August to 30 April and whenever the UV is 3 and above at other times.

THINGS TO KNOW

TIMETABLE



In order to assist students in following the routines of school life and organising themselves, the bell will ring at the following times each day.

8:45am School begins

10:35am Recess Eating commences

10:45am Recess Play

11:10 am Lessons commence

12:50 pm Lunch eating time

1.00 pm Play begins

1:25pm Lessons commence

3:10 pm School ends

On the last day of each term school dismisses at 2:10 pm. Students are supervised at the school from 8.30 am. Prior to this, we ask you book your child into Before School Care. If you will be late, notify the school on 8843 0186 so that your child is informed and distress minimised.

To ensure student safety please ensure you attend the front office if you need to collect or drop off your student in school hours. There is a sign in and out sheet for all children collected throughout the school day.

Homework Club:

From 3:10 - 3:25pm children are supervised in the Community Space by a teacher and are supported to do their homework.

Eating Time:

Students are supervised for the eating of lunch prior to play-time. Lunch that is not eaten is placed back in the child's lunch box so that parents are informed. If your child has any specific food allergies, please advise staff so that it can be recorded on the school records.

THINGS TO KNOW

TRANSITION



Transitioning from Kindy to School

Students who attend local preschools receive information about the school and have an opportunity to visit the school when there are organised visits or through an appointment with the Principal. A transition program, consisting of three visits, is negotiated between parents and the Reception teacher, taking into consideration each child's needs. Information is sent out early to ensure parents and learners feel supported and ready for their transition to Watervale Primary School.

Transitioning from Primary to High School

Students attending local secondary schools will commence an orientation program in Term 3. This is done in association with students from other feeder schools. Notices for these are communicated to parents through the newsletter or a specific note home.

At the end of the year, all students leaving the school for their secondary education have a graduation dinner at a local eatery. The children's meals are paid for by the school.



THINGS TO KNOW

UNIFORM & PHOTOS



We strongly encourage students to dress in the school colours and the school sells school uniform items in the school colours of red, white and navy. These are offered through the front office.

We ask parents to clearly name their child's property, including hats and water containers. Watervale Primary School is a Sun Safe school and this requires children to wear a hat of appropriate style, either broad-brimmed or bucket hat, when they are outside at all times. The SunSmart policy applies for all terms of the year.

PHOTOGRAPHS:

A photographer visits the school annually to photograph students as a school, as a class, as individuals and in family groups if requested. Payment is required before photographs are taken should a family decide to participate. There is no obligation to buy.

COST OF UNIFORM			
Polo Shirt	\$26	Fleecy Hoodie	\$30
Canterbury Rugby Jumper	\$60	WPS Beanie	\$20
School Hat	\$8	School Bag	\$50

IMPORTANT CONTACTS

Name	Position	Email
Kel Bunfield	Principal	kel.barns250@schools.sa.edu.au
Jo Tilley	R-2 Teacher	joanne.tilley213@schools.sa.edu.au
Loren Liebelt	3-6 and Sustainability Teacher	loren.bennett@472schools.sa.edu.au
Ben Johnson	3-6 and PE Teacher	ben.johnson908@schools.sa.edu.au
Ella McHenry	R-2 and Sustainability Teacher	ella.mchenry218@schools.sa.edu.au
Alison Burford	Specialist Teacher	alison.burford669@schools.sa.edu.au
Samantha Muller	OSHC Director	dl.0470.oshc@schools.sa.edu.au
Sharyn Williams	Pastoral Support Worker	
School Email		dl.0470.info@schools.sa.edu.au



WATERVALE PRIMARY SCHOOL

CONTACT INFORMATION

PHONE: 8843 0186

MOBILE: 0484 910 612

ADDRESS: 27 MAIN NORTH ROAD WATERVALE SA 5452

EMAIL: DL.0470.INFO@SCHOOLS.SA.EDU.AU

WEBSITE: WWW.WATERVALPS.SA.EDU.AU